



COMPELLED

Honoring the Legacy,
Shaping the Future

WISCONSIN LUTHERAN SEMINARY

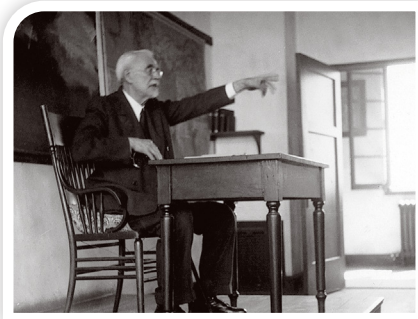
Campaign *for* Campus Renovation



Our History

Established in 1863, Wisconsin Lutheran Seminary (WLS) was created to train pastors for the Wisconsin Synod. The seminary has a rich history of pastors forming pastors for ministry, including nearly a century on its Mequon campus. In some ways the seminary's age is part of its appeal, providing unique beauty and projecting stability as the preparation of pastors has continued through the generations.

The desire to prepare pastors for the twenty-first century compels us to tackle the challenges of an aging campus and equip the seminary for its mission today and tomorrow.



Professor August Pieper



Original Second Floor Library



Construction Underway, 1928

A Changing World Needs the Changeless Gospel

The seminary's original designs did not anticipate small-group discussion in the classroom and could not have imagined laptops and smart boards. Education has changed along with the students, and we want to offer them—and, most importantly, our Lord—the best.

Today, our mission is as important as ever. Meeting the challenges facing our synod requires God's blessing—and demands our best efforts. Our synod needs more pastors to fill current vacancies and seize new opportunities. Since WLS is the only training ground for pastors in the WELS, it is vital to have facilities that support an excellent educational experience.

Our Vision

Our campus plans include a new education center with classrooms and small-group spaces, a gathering hall addition to our auditorium building, and renovation of existing spaces for a student lounge and on-site faculty offices. Some exciting features include:



Classrooms that encourage interaction and support technology.



Intimate spaces for students and faculty to collaborate, and for students to receive personalized instruction and thoughtful mentorship from their professors.



Places on campus where students, faculty, and their families can meet and develop connections beyond the confines of the classroom.



Ultimately, this project is about presenting God with our finest. He has entrusted to his church the task of proclaiming the gospel, and his love compels us to bring that gospel to the world. Contemplate how we might best glorify God as we train men for that mission today. Consider how you might partner in this work so that our seminary can continue to faithfully and effectively train pastors for generations to come.



Seminary Campus Timeline



The Compelled Campaign Will Benefit

New classrooms, study spaces, and offices bring students and professors together—accelerating learning, deepening fellowship, and expanding mentorship across campus.

Teaching & Learning

Modernized classrooms designed for discussion and small-group work, supported by integrated technology, will help students engage the material and one another.



Students

Deeper relationship with peers will develop as they spend time together in shared spaces. Easier access to professors means questions and concerns can be addressed more quickly.



Professors

Increased proximity fosters collaboration. Relationships will thrive when instructors seek insights from colleagues in other disciplines, helping each grow as teachers.



The Seminary Family

Improved spaces for students' wives to gather for Bible studies or book clubs, for devotional or marriage workshops with their husbands, or for playdates with their children.



Interested in learning more about our efforts?

Contact Sean Young



262-242-8179



sean.young@wls.edu

