

COMPELLED

Honoring the Legacy,
Shaping the Future

WISCONSIN LUTHERAN SEMINARY

Campaign *for* Campus Expansion





Dear Family,

Greetings from Mequon! The school year is in full swing at the seminary. Classes are really starting to pick up, so my time in the classroom is a very important part of my day. My professors are incredible, and I can really feel their care in training us to be pastors. In each of the four classes a day, I'm learning so much that will directly apply to my future ministry. Even though the classes are awesome, it is still a long period of time in one room. My classroom is certainly usable, but it feels a little outdated; and it is small and cramped for the larger number of students in my class. Our room is down in the basement, so we don't get any natural sunlight. It's always a bit dark down there, which makes it a bit difficult to stay motivated in the morning. It's not unbearable by any means, but new larger classrooms with more natural light would make a big difference.

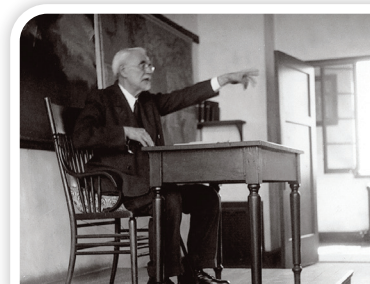
Of course, not all my time is spent in the classroom. I've grown so much closer to the guys in my class throughout my time here. I've developed close relationships with my professors as well! There's an unmistakable sense of brotherhood on this campus that's hard to miss. It would be great to have a space specifically designed for informal student gatherings, especially those that include student wives. Fellowship opportunities are awesome, but the lack of space can make it feel somewhat crowded. The dorm basement is a convenient place for student gatherings, but it doesn't always fit these large groups comfortably. It would be really nice if there was a designated space that we could use. We always find a way to enjoy the fellowship, but we would all appreciate an upgrade.

I am truly blessed to live in such a Christ-centered environment. There are certainly things that could be improved on this campus, but I pray that our focus always remains on the One who gave it to us. Praise be to God!

*Sincerely,
Your Seminarian*

Overview

Wisconsin Lutheran Seminary (WLS), founded in 1863, has served as the central training ground for pastors of the Wisconsin Evangelical Lutheran Synod (WELS) for over 160 years. Located in Mequon since 1929, the seminary's facilities—though rich in heritage—are increasingly inadequate for modern education and ministerial training needs.



Professor August Pieper



Original Second Floor Library



Construction Underway, 1928

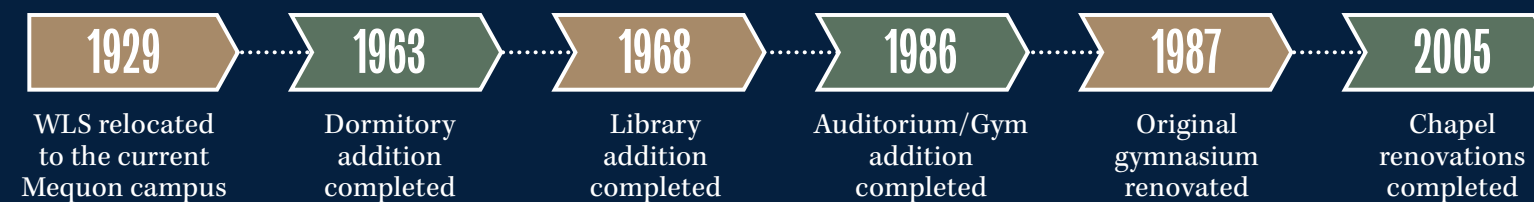
Project Goal

To preserve the historic character of the seminary while transforming its facilities to better serve current and future students, support faculty, and foster community—all with the intent of forming pastors to proclaim the changeless gospel in a changing world.

Vision for Our Future

This project aims to send a clear message: our church body values and supports future pastors and their families. More than infrastructure, these spaces will be instruments of spiritual and pastoral formation. By fostering a dynamic and relational campus culture, WLS will continue to equip men to proclaim God's truth with clarity, compassion, and confidence.

Seminary Campus Timeline



Key Features of the Campus Renovation

Although the new education center is the centerpiece of the campus renewal plan, it represents the catalyst for change. The new facility provides opportunities that extend beyond the classroom and directly support the core mission of pastors forming pastors.



Six Spacious, Technology-Integrated Classrooms

- Filled with natural light, which enhances learning and student well-being
- Designed for flexible seating arrangements to support group work, movement, and discussion-based instruction
- Outfitted with modern education technology to maximize instructional effectiveness



Faculty Office Integration

- New education center provides space for existing classrooms to be converted into small on-site offices for all faculty members
- Students would have access to faculty offices for private conversations with their professors
- Student-faculty and faculty-faculty interaction is encouraged, fostering deeper relationships and mentorships



Spaces for Fellowship and Connection

- Places on campus where students, faculty, and their families can meet and develop connections beyond the classroom
- Dedicated space for students' wives and children to gather to form a support network
- Flexible room to support fellowship that results from large campus events such as graduation, concerts, or the Symposium



Small-Group and Mentorship Spaces

- Designed to facilitate one-on-one meetings, sermon reviews, and personal pastoral mentorship
- Critical for reinforcing the relational, formational aspect of pastoral modeling
- Located just outside classrooms for informal discussions, group projects, or quiet study

Key Campus Enhancements

1. New Education Center

- Six flexible, spacious classrooms with ample light and modern technology
- Small group meeting areas and collaborative alcoves

2. Campus Gathering Hall

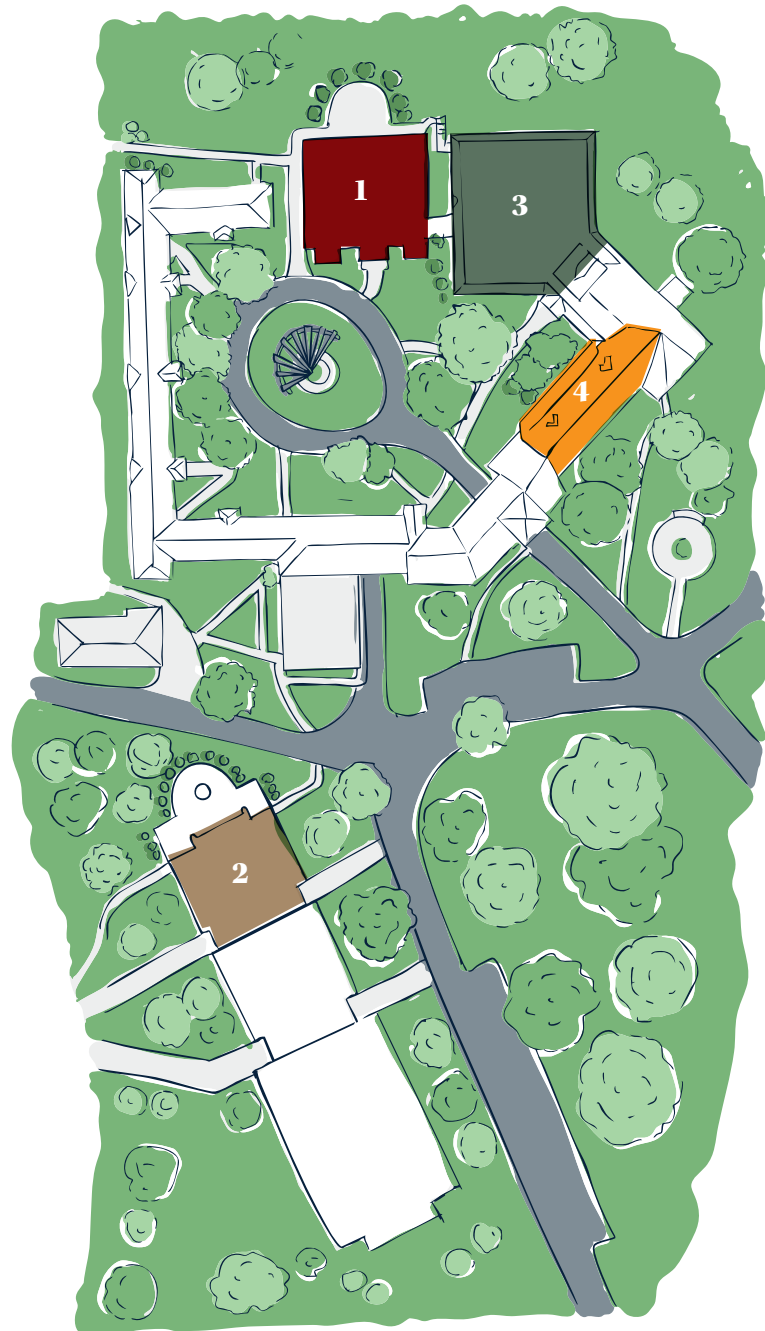
- A large, welcoming multipurpose space for students and their families
- Readily available areas for students' wives to build support and community networks
- Connected to the auditorium for fellowship use during large events that bring guests onto campus (e.g., *Call Day*)

3. Library Renovations

- Climate-controlled and more readily accessible rare books room
- Enhanced study areas and collaborative spaces
- A comfortable gathering space for students and faculty, complete with lounge areas, a fireplace, and a coffee bar

4. On-Site Faculty Offices

- On-site office space for professors that will allow students to have private, one-on-one conversations
- Spontaneous interactions, pastoral mentorship, and academic collaboration are supported
- Increased faculty academic collaboration



WHY NOW?

Urgent Mission Needs: The harvest is plentiful, but the workers are few. We need to prepare additional workers for the harvest field with the skills and training required to meet the challenges of contemporary ministry.

Outdated Facilities: Existing buildings, especially the classroom wing, were designed for an era long past and hinder modern teaching approaches.

Formational Impact: Better learning environments strengthen spiritual formation, intellectual growth, and personal relationships crucial to ministry.

Generational Moment: The last major upgrade was converting the basement gymnasium to classrooms over 55 years ago. With WLS approaching the 100-year mark on its Mequon campus, this is a timely and transformative investment.

Why It Matters

Current Challenges:

- Many classes are held in repurposed basement rooms—cramped, dimly lit, with poor acoustics and limited modern outlets and connectivity to support the widespread use of laptops and other technology in today's classrooms
- The outdated setup limits collaboration, engagement, and instructor mobility due to reliance on power strips and extension cords spread across the floor
- Lack of private or flexible spaces during breaks creates competition for space and missed mentorship opportunities
- Faculty offices are located in their homes, limiting student accessibility and diminishing opportunities for faculty collaboration

Transformative Impact:

- Aligns physical space with best practices in ministry preparation
- Creates a collaborative learning environment that reflects the settings pastors will encounter in their future ministries
- Deepens the “pastors forming pastors” model through daily proximity, mentorship, and fellowship



This new education center isn't just about bricks and mortar. It's a strategic, **mission-driven investment** in the future pastors of the church—spaces that will echo with the **Word of God, shape servant leaders, and prepare them for a lifetime of gospel proclamation.**

Invitation to Partner

This is a once-in-a-generation opportunity to shape the future of pastoral ministry in the WELS. The seminary invites generous partners to support this mission, ensuring that future pastors are trained in facilities that reflect the nobility of their calling and the urgency of their mission.

Thank you!

We extend heartfelt thanks for taking the time to thoughtfully consider our vision and needs. Your careful attention reflects a shared commitment to the mission of preparing faithful pastors to proclaim the gospel of Jesus Christ with clarity and conviction.

Your engagement is not merely appreciated—it is profoundly meaningful. It demonstrates your understanding of the vital role Wisconsin Lutheran Seminary plays in equipping shepherds for service in a world that so urgently needs the hope of the gospel.

On behalf of the seminary faculty, staff, students, and the broader synod we serve, thank you for your prayerful consideration, your support, and your partnership in this enduring and sacred work.



Interested in learning more about our efforts?

Contact Sean Young



262-242-8179



sean.young@wls.edu

